



# School District of Shiocton



## Referendum 2024: Building Their Future





# School District of Shiocton



**Welcome**

**&**

**Introductions**



# School District of Shiocton



## **It's about educating every child ....**

From academics to athletics, from fine arts to the culinary arts, from physical education to technology, from content to skills, from concept to application

## **It's about preparing every child ....**

From the workplace to a 4-year university, from the military to a 2-year college, from the school setting to the larger community

## **It's about the needs of every child ....**

From belonging to leading, from collaborating to presenting, from social and emotional to mental and physical health, from gaps to growth

**It's about every child ... It's about our community.**



# School District of Shiocton



## Referendum 2024: Building Their Future

OPERATIONAL REFERENDUM



# School District of Shiocton



## OPERATIONAL REFERENDUM

### Staff attraction and retention

- Competitive salaries and benefits
- Comprehensive health and dental coverage
- Continuing education and training
- Mentor/Mentee program
- Membership to the Shiocton Fitness Center
- Access to on-site child care

### Programming

- Fine Arts: Gr 5 – 12 band; Gr 6 – 12 choir, Gr K-12 Art
- Co-Curriculars: Spring Musical/Play; MS & HS Student Council; Quiz Bowl; Math League; HOSA; Skills USA; FBLA; Art Club; Ski Club
- Athletics: MS and HS; expanded offerings now include Trap Shoot, Girls Wrestling; exploring MS Softball & Baseball
- Uniforms, equipment, and consumables

### Staffing to meet Student needs

- Small class sizes (most are 18:1 or less in elementary grades)
- School Nurse (1.0FTE)
- Two full time School Counselors
- Academic Interventionists (reading, math)
- Behavior Interventionist (.6FTE)
- Social Worker (1.0FTE)
- School Psychologist (1.0FTE)
- Speech Therapists (1.5FTE)
- Recess supervisors
- Substitute teachers (contracted)
- Handwriting without Tears instruction
- Professional Development -
  - Conscious Discipline (Gr PK – 5)
  - Restorative Practices (Gr 6 – 12)
  - Abuse and Neglect
  - Youth Mental Health First Aid
  - CPR & First Aid
  - Suicide Awareness

### Curriculum and Instruction

- 5 year rotation (curricula, instruments, equipment, etc.)
- Blended delivery: text books & workbooks + online
- 1:1 digital opportunities, PK – Gr 12
- Effective integration of instructional technology
- Continue education and training for professional, support, and administrative staff
- College Courses - CAPP and PIE – earn high school credit *and* college credit (4 year)
- Dual Credit Courses and Start College Now w/FVTC
- CTE Industry-standard certifications (Act 59)
- Early College Credit Program (ECCP)



# School District of Shiocton



## OPERATIONAL REFERENDUM

### Building, Grounds, Maintenance

- Annual and preventative maintenance
- Equipment and vehicle maintenance
- Grounds maintenance
- Monitor and manage infrastructure (HVAC, chillers, coolers, boilers, etc.)
- Remodeling to meet changing needs

### Transportation

- General transportation of students to/from school
- Instruction-related field trips
- Co-curricular travel
  - Athletics
  - Clubs, organizations
  - Specialty trips (band/choir trip, UW visit, etc)
- In-house transportation
  - Early Childhood students (3K)
  - Students with specialized instructional needs
  - Athletics (as needed)

### Technology Infrastructure

- Building security (doors and cameras)
- HVAC control system
- Alarm system
- Computer Servers and Networks

### Community

- Shiocton Fitness Center
- Morning hall walking
- Youth sports: Hoops Club; Wrestling Club; Volleyball; Flag Football; CPR & 1<sup>st</sup> Aid Training
- Collaborate with Shiocton Summer Sports
- Veterans Day Program
- Arts & Craft Fair



# School District of Shiocton



## What's the Impact on my Taxes?

If **both** the Operational and the Capital (Building) referendums are approved, taxes:

- will increase in 2024-2025 by \$1.97/\$1000 of home valuation
  - \$197 increase on a \$100,000 home
- will not increase in 2025-2026
- will not increase in 2026-2027

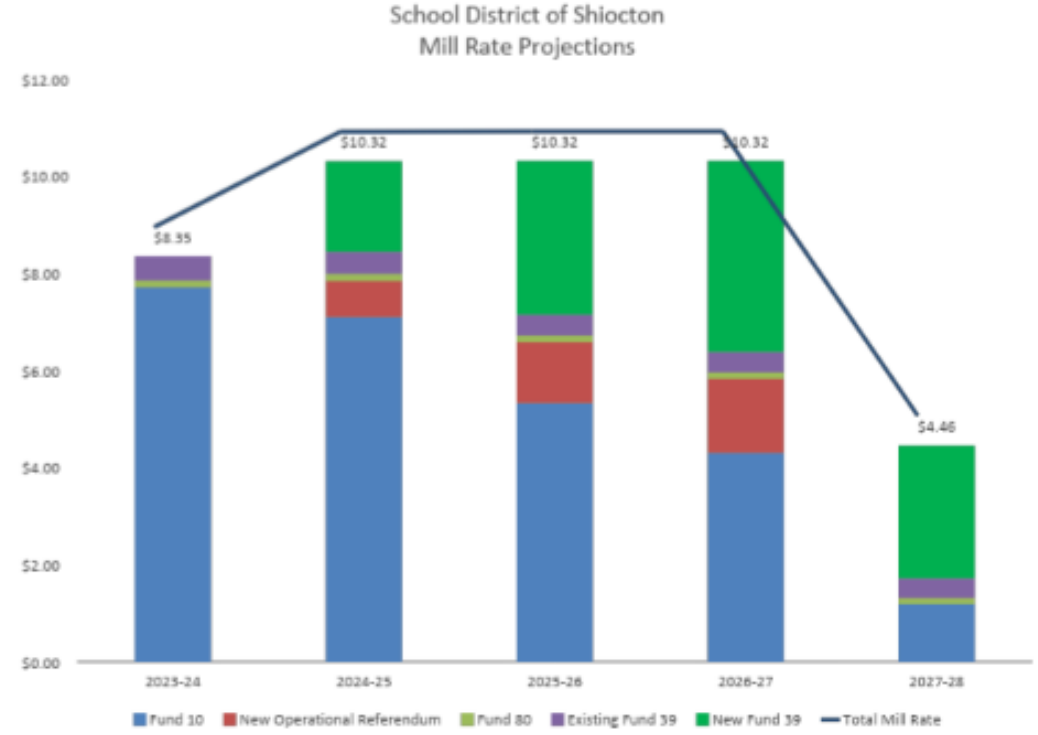
**Of the \$1.97 increase:**

- Operational = \$.75
- Capital = \$1.22

Similarly to the 2018 building referendum, the District expects to be able to capitalize on its solid financial base to earn an AA bond rating resulting in reduced financing charges.

## Mill Rate Projections (with Capital and Operational)

Taxation Calculation							
Year	Projected Mill Rate - Referendum	Home Value	Projected Tax Payment	Actual Mill Rate	Actual Tax	Difference b/t Actual & Projected Tax Payment	Difference b/t Years
<b>2021 REF</b>							
21-22	\$10.09	\$150,000	\$1,513.50	9.07	\$1,360.50	(\$153)	
22-23	\$10.13	\$150,000	\$1,519.50	7.71	\$1,156.50	(\$363)	(\$204.00)
23-24	\$10.25	\$150,000	\$1,537.50	8.35	\$1,252.50	(\$285)	\$96.00
<b>2024 REF</b>							
24-25	\$10.32	\$150,000	\$1,548.00	\$10.32	\$1,548.00	\$0	\$295.50
25-26	\$10.32	\$150,000	\$1,548.00	\$10.32	\$1,548.00	\$0	\$0.00
26-27	\$10.32	\$150,000	\$1,548.00	\$10.32	\$1,548.00	\$0	\$0.00



Each of the past three school years, *the actual mill rate has been less than* what was projected at referendum time. Increases in Home Value notwithstanding, the actual mill rate resulted in a decrease in the actual tax paid relative to that which was forecast at referendum time in 2020.

This calculation is based upon the factors the School District of Shiocton can control and does not include any reassessments by the individual municipalities, any increase in the other taxing entities which contribute to your overall tax bill.

The District expects mill rates to be stable over the course of the referendum, including the next three years at a rate of \$10.32.



# School District of Shiocton



## Land Valuation & Tax Assessment

We recognize that agriculture is a big part of our school district community. It is important to understand the impact of this referendum accurately.

### Agricultural Land Assessment

- Assessed value of agricultural land is based on its use in agriculture, rather than its fair market value
- Guidelines & Land Use Value can be found on the Department of Revenue website
- Buildings and improvements on a farm such as barns, houses, and silos, together with the land necessary for their location and convenience, are separately classified and continue to be assessed at fair market value
- Assessed Value of agricultural land can be vastly different from fair market value



Agricultural Land Assessment					
Type of Property			Taxed on Total Value		
Tax Year: 2017					
<b>Real Estate Assessments</b>					
Code	Description	Acres	Land Value	Improvement Value	Total Value
1	Residential	2.86	\$17,500	\$137,700	\$155,200
4	Agriculture	21.9	\$4,500	\$0	\$4,500
5m	Agricultural Forest	12	\$16,800	\$0	\$16,800
Total:		36.76	\$38,800	\$137,700	\$176,500
Estimated Fair Market Value:		-	Average Assessment Ratio: 0.999863721		* MFL and PFC values are not included in the total.
<b>Special Assessments</b>					
Assessment	Amount				
Garbage Collection	\$125.00				

Residential, Agriculture, and Forest lands are taxed differently.

- Assessed value of agricultural land is based on its use in agriculture, rather than its fair market value, which is how most homeowners see their assessments.
- Assessed value of agriculture land tends to be significantly lower than fair market value.
- Guidelines and further land use value information and explanations can be reviewed on the Wisconsin Department of Revenue website (<https://www.revenue.wi.gov/Pages/Home.aspx>).





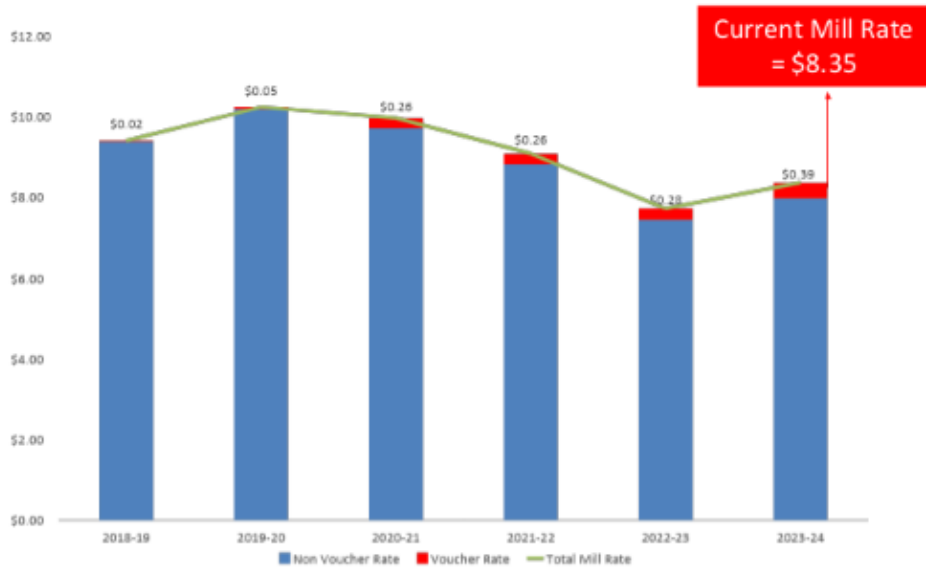
# School District of Shiocton



## Mill Rate - Voucher Impact

### Mill Rate History (Voucher Impact)

Dating back to 2018-19, a portion of the District's funding goes to private schools eligible via the voucher program; that loss in funding requires a property tax increase



Of the current \$8.35 mill rate, \$0.39 is attributable to voucher payments. Without the voucher payments tax, the mill rate assessed to residents of the School District of Shiocton would be \$7.96.

*NOTE: WI State Statutes require a direct deduction from funds provided to public school districts, whose only recourse to recapture those funds is to place a equal tax back on the district's tax payers.*

Tax Year	Tax Rate Per \$1000 of Property Value	Sch District of Shiocton Portion of Tax Rate	Private Schools Portion of Tax Rate
2020	\$ 10.23	\$ 10.18	\$ 0.05
2021	\$ 9.96	\$ 9.70	\$ 0.26
2022	\$ 9.07	\$ 8.81	\$ 0.26
2023	\$ 7.71	\$ 7.43	\$ 0.28
2024	\$ 8.35	\$ 7.96	\$ 0.39
2025	\$ 10.32	\$ 9.88	\$ 0.44
2026	\$ 10.32	\$ 9.83	\$ 0.49
2027	\$ 10.32	\$ 9.79	\$ 0.53

The mill rate amount attributable to voucher schools has **increased 10-fold** in seven years.

	Fiscal Year	Sch Dist of Shiocton Portion	Private School Portion of Tax Rate	Total Voucher Deductions	WPCP Private Sch Voucher	SNSP Private Sch Voucher
actual	FY20	10.17842	0.05158	\$16,092	\$16,092	\$0
actual	FY21	9.70309	0.25691	\$91,946	\$91,946	\$0
actual	FY22	8.80958	0.26042	\$100,541	\$87,528	\$13,013
actual	FY23	7.42912	0.28088	\$127,586	\$101,434	\$26,152
actual	FY24	7.96061	0.38939	\$198,578	\$153,383	\$45,195
est	FY25	9.87742	0.44258	\$235,000	\$175,000	\$60,000
est	FY26	9.83312	0.48688	\$275,000	\$200,000	\$75,000
est	FY27	9.78783	0.53217	\$315,000	\$225,000	\$90,000

The total dollar amount of voucher payments directly deducted from the District's State funding has **increased 12-fold** in the past seven years, growing from just over \$16,000 in 2020 to nearly \$200,000 in 2024.



# School District of Shiocton



## What if the referendum doesn't pass?

### Operational:

If the Operational Referendum does not pass:

- the District will experience a significant shortfall in necessary funds, which will likely result in:
  - constriction of programs
  - reduced offerings
  - changes in staffing and
  - increases in class sizes

Thankfully, we have been able to avoid these types of difficult decisions because our community has historically supported the school district's need for operational referendums.

#### State Statute 121.905:

Per State Statute 121.905, the District's base revenue per member is frozen at the current amount for **three years** until an Operational Referendum is approved by district voters.



# School District of Shiocton



## Referendum 2024: Building Their Future

CAPITAL CAMPAIGN (BUILDING) REFERENDUM



# School District of Shiocton



## Capital Campaign - Overview





# School District of Shiocton

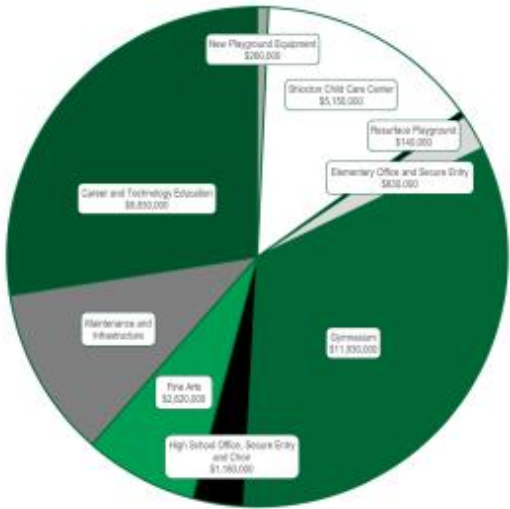


## Building Their Future -- Cost Estimate, Timeline

### What are the facility budgets?

- Budgets are based on contractor experience and current construction market.
- Budgets are reasonable with contingency for unforeseeable circumstances.
- Consideration is made for a timeline of future construction.
- All construction work will be competitively bid.
- Emphasis placed on helping the local economy by hiring local contractors.

Hoffman Bids 100% of the Project Work



New playground equipment	\$260,000
Resurface playground	\$140,000
Elementary office and secure entry	\$830,000
Shiocton Child Care Center	\$5,150,000
High school office, secure entry and choir	\$1,180,000
Fine Arts	\$2,620,000
Career and Technology Education	\$9,830,000
Gymnasium	\$11,830,000
Maintenance and Infrastructure	\$3,960,000
<b>Total - Capital Referendum Question</b>	<b>\$35,800,000</b>

### When will the projects be designed, bid, and built?

Project	Design	Bidding	Construction
<b>Shiocton Child Care Center and Elementary Secure Entry New Addition</b>	Feb 24 - Jul 24	Jul-Aug 24	Sep 24 - May 25
<b>Shiocton Child Care Center Renovations and New Playground</b>	Feb 24 - Oct 24	Sep-Oct 24	May 25 - Sep 25
<b>Infrastructure and Maintenance Updates</b>	Feb 24 - Oct 24	Sep-Oct 24	May 25 - Sep 25
<b>Technical Education, Fine Arts, and Gymnasium Additions</b>	Feb 24 - Oct 24	Sep-Oct 24	Sep 25 - Aug 26
<b>Locker Rooms and Classroom Areas Renovation</b>	Feb 24 - Oct 24	Sep-Oct 24	May 24 - Aug 26

### Construction Sequencing:

Because the proposed projects will be constructed while school is in session, the sequencing of construction prioritizes student safety and minimizing the disruption of education. It is not an indication of project importance or urgency. Areas of new construction such as the secure entries for elementary and high school, the new band area, the new childcare area, and the new gymnasium will be completed first. This will free up space in the existing school to be utilized to accommodate those that are displaced from areas that will be deconstructed like the existing metal shop and automotive shop. This sequence allows the new construction to happen adjacent to the existing school creating very little impact on safety or operations.



# School District of Shiocton



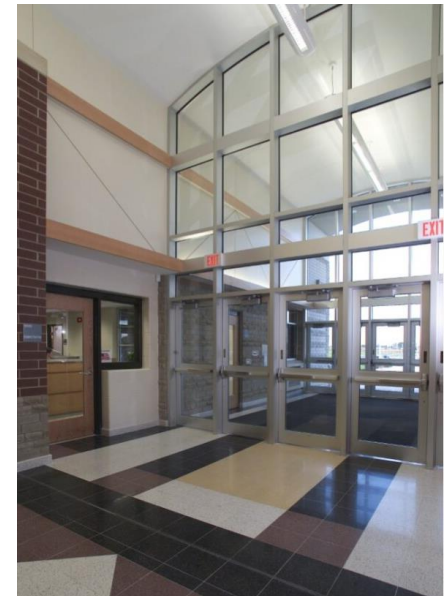
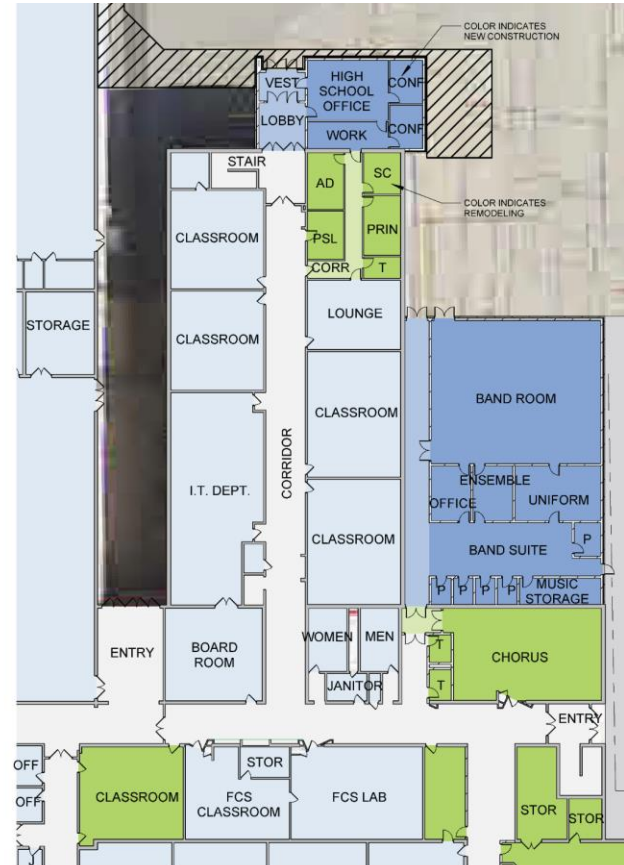
## Safe and Secure Entrances

### Elementary School



A new office with secured entrances would be constructed at the elementary wing by building out from the current Kindergarten classrooms towards North Broad Street.

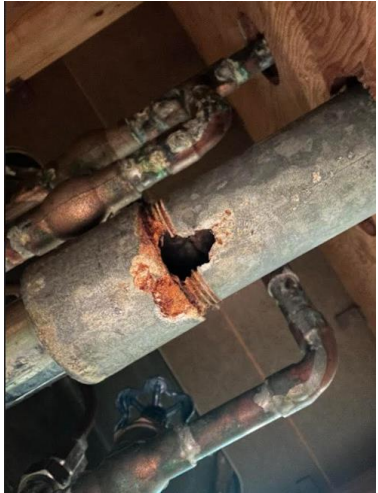
### Middle/High School



A new office with secured entrances would be constructed on the backside of the high school by extending the choir wing.



# School District of Shiocton



Old plumbing, rusted through pipes, disintegrating insulation, and damage caused by pipes that leaked or rusted through.

## Infrastructure

- Replace roofs
- Replace boilers and heating pumps
- Replace plumbing
- Replace main electrical service
- Replace 20 electrical panel boards (installed prior to 1996)
- Replace generator and transfer switches
- Replace 6 rooftop air handling units



Failing HVAC equipment - motor driving our HVAC unit in the HS gym. The insulation is so old and brittle, it was falling apart from the wire.

Aged and leaking gutters on the HS building caused water to run directly into the school creating damage to the Tech Ed ceiling.





# School District of Shiocton

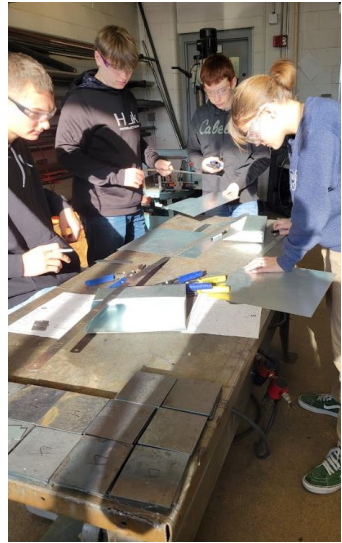


## Technical Education

Overlapping classes combined with **limited space** serve to both limit the instruction that can be provided, as well as creates **safety concerns**. Students are standing elbow to elbow bumping into each other constantly with no space to work with both hand and power tools



Home Maintenance and Construction classes being taught in the Auto Lab due to **space restrictions**. The walls and tools had to be moved daily for the auto class. The small engines class was operating at the same time on the other end of the lab.



Our Metals room **lack sufficient space** for the number of welding booths needed. This results in students welding on an open table exposing the room to the UV light, which creates multiple **safety concerns**.







# School District of Shiocton

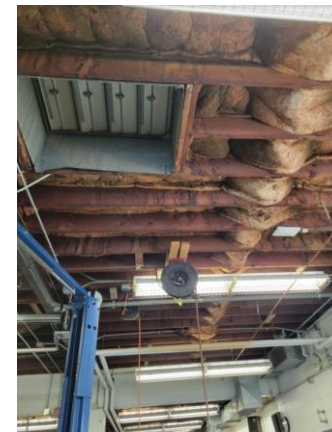


## Technical Education

Electrical capacity is at its maximum, We can only plug in certain machines at the same time throughout all of the Tech Ed learning areas since we lack a sufficient number of breakers and overall electrical service to operate them all at the same time. This limits the education that we can provide to students seeking to learn the trades.



Exposed fiberglass ceilings, which are black and soot-covered, as well as stained and disintegrating from roof leaks. Water was found to be running in/out of the electrical panels and welders, creating additional **safety concerns**.





# School District of Shiocton



## Playground

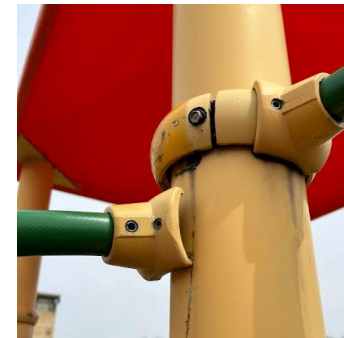


Recognizing that the Playground serves our students but also doubles as a community play space, we would look to:

- Replace main play structure
- Add ADA compliant seating
- Add walking path for less ambulatory
- Add additional play structures
- Replace swings



The main play structure on our playground is estimated to be 27 years old. Collars, necks, joints, and other structural aspects of the unit are showing significant signs of wear, breaking and rusting through all together in many areas, which creates safety concerns.

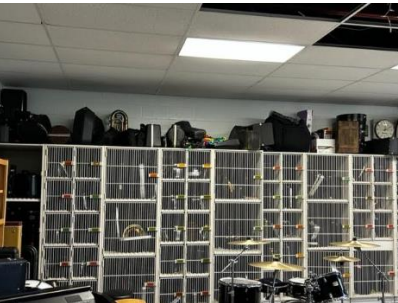
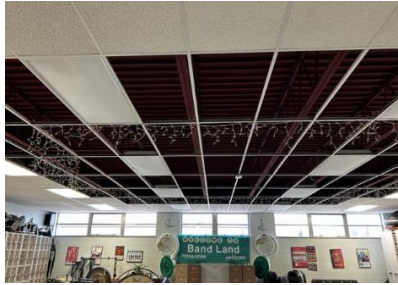




# School District of Shiocton



## Fine Arts Wing & Gymnasium



Practice rooms are very small and difficult to fit multiple students who are practicing for concerts or competition.

The large instructional area lacks sufficient space for instruction, as well as safe storage of instruments.

Additionally, the acoustics in the current space are sub-standard; ceiling tiles have been removed to try to address the reverberation of sound so that instrumentalists may more accurately discern tones (which is especially necessary for new instrumentalist as they “train their ear”).







# School District of Shiocton



## Fine Arts Wing & Gymnasium

Recognizing that the gymnasiums serve as instructional classrooms for our students and practice and performance areas for student-athletes, as well as practice and performance areas for our youth programs and recreational space for our adult community members, we would look to construct a **varsity gym** with a main performance court, plus:

- Side-by-side practice courts
- 6 – 8 basketball hoops
- Wrestling mats and hoists
- Recessed volleyball standards
- Court lines for all sports, including pickleball and badminton
- **ADA compliant seating** for 800-1000 guest

Current locker room and band room spaces would be **remodeled** to provide team locker rooms, officials/coaches' offices, athlete locker rooms training room, and storage.



A vestibule and lobby would be built so that attendees would have one main point of entrance flanked with restrooms and new concession stand.

Given that the current choir room would be remodeled for the safe and secure MS/HS entrance and that the band room would be remodeled to provide additional locker space, a new **Fine Arts wing** would be built. The current Tech Ed classrooms would be remodeled for the choir room, while the new structure would house an enlarge, acoustically engineered band room, along with practice and ensemble rooms. This build would bring together our instrumental and vocal instructional programs and provide for increased opportunity for collaboration and cross participation.



# School District of Shiocton



## SCCC: Providing Education to our youngest learners

Ages 6-weeks to 8 years old

Full-time, Part-time \* Before & After School

### SCCC's Purpose:

Provide quality, affordable care for the children of the immediate and surrounding communities in an environment that supports the development and growth of each child.



Family Feast Day



WI Model Early Learning Standards (WMELS) - fine motor skill development

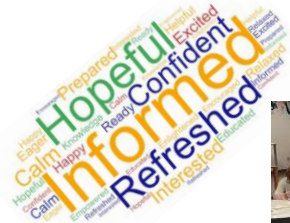


"mad science" experiments

### SCCC goes to the Zoo



SCCC offers our learners a jump start to their academic life and is a conduit of enrollees into our Elementary School.



Training for Parents, Staff

SCCC is the equivalent of "youth sports" for our 13 years of academics.



Field trips are a great way for our children to apply their learned skills while continuing the learning process, exploring the world around them to build background knowledge, and simply having fun!

SCCC will provide opportunities for children to grow intellectually, socially, and emotionally through both structured programming and organized play that incorporates resources and supports from the School District of Shiocton and the larger community.





# School District of Shiocton



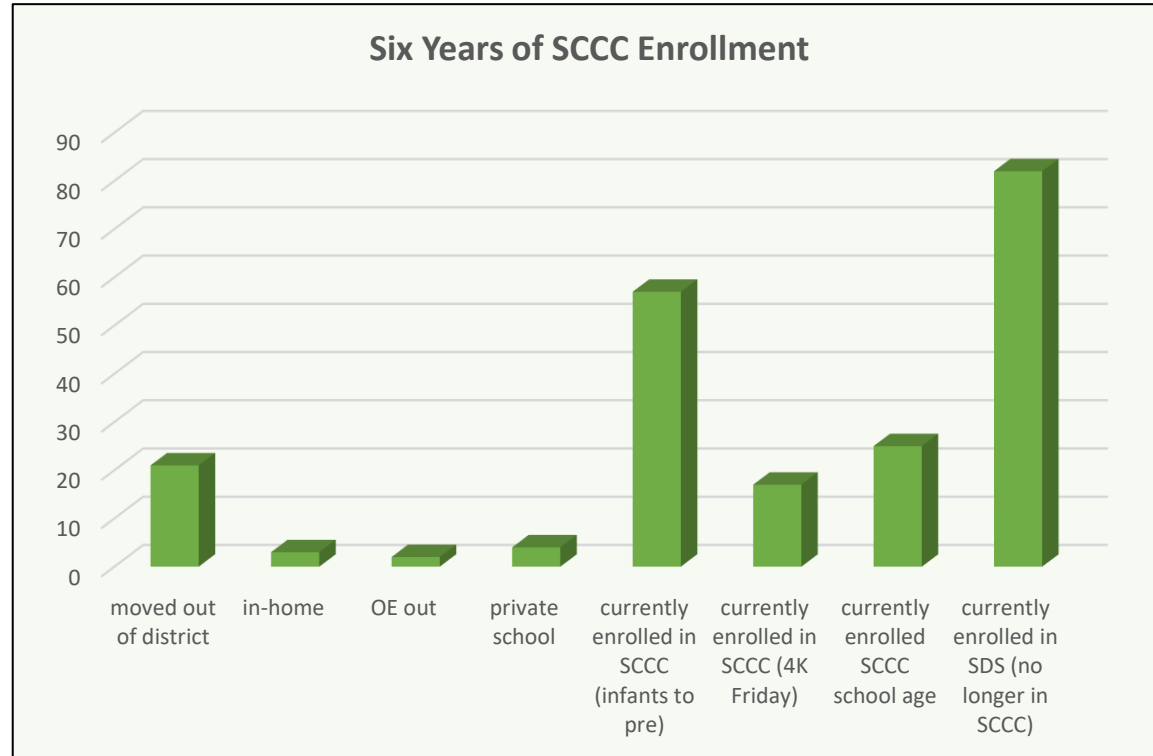
The Shiocton Child Care Center (SCCC) opened its doors in August 2018 with just 18 students (ages 6 weeks to 9 years) and 3 primary goals:

- Retain resident students who might otherwise open enroll out of Shiocton Schools
- Attract students from neighboring areas to Open Enroll in Shiocton Schools
- Attract and retain high-quality professional and support staff

Fast forward 6 years, SCCC now provides pre-academic, social-emotional, and development instruction to nearly 100 children. Additionally, SCCC continues to meet the original 3 goals:

- Retained elementary-aged children, to the age of 10, reducing open enrollments out
  - This year, 3 resident students' enrollment can be directly attributable to SCCC
- Increased open enrollments into Shiocton Schools
  - This year, there are 17 children open enrolled in Gr 4K – 3<sup>rd</sup> that can be directly attributable to SCCC.
- Attracted and retained high quality staff members
  - This year, 25 of the 98 children enrolled are children of staff members; that number is expected to increase by 6 more next fall.

## Shiocton Child Care Center (SCCC)



Of the 211 children who have enrolled in SCCC since August 2018:

- 181 of them remain with us today
  - 82 of them are enrolled in Shiocton Elementary School and no longer receive care from SCCC
  - 25 more are enrolled in Kindergarten to Gr 3 and attend the Before/After Care program
  - 17 more are children enrolled in Shiocton's 4K program and receive SCCC instruction every Friday
  - 57 more children are enrolled in SCCC during the day (infants to pre-school)
- Of the other 30 children: 21 moved out of the area and no longer could attend; 3 returned to in-home care; 4 attend private schools, and 2 open enrolled out



# School District of Shiocton



## Shiocton Child Care Center (SCCC)

Building a wing for the Shiocton Child Care Center (SCCC) will:

- allow for continued growth, up to 125 children
- afford our youngest learners instruction in pre-academic and social/emotional learning using the same or related curriculum
- maintain a safe and secure learning environment for up to 125 children of our community



Building a wing for the Shiocton Child Care Center (SCCC) will afford SCCC the ability to help grow the school population and our community by meeting our original 3 goals:

- **Retain resident students** who might otherwise open enroll out of Shiocton Schools
- **Attract students from neighboring districts** to Open Enroll in Shiocton Schools
- **Attract and retain high-quality professional and support staff**





# School District of Shiocton



## What if the Capital Referendum doesn't pass?

**We do not have a 'Plan B' or an alternative plan to bring back to the voters. Why not?**

- Because the Building Project Committee has already reduced the full scope of needed projects down from \$75million to \$35.8million
- Because the projects presented to you are interrelated, meaning there is a dependency component within each one of them on another (EX: to complete the MS/HS secure entrance, we must move the choir room, which means we must move the two tech ed teaching classrooms, which means we must renovate the tech ed area, which means...)
- Because the projects presented to you are integral to the growth of our programs, which grow our students, and which serve to grow our community
- Because to wait another year (Feb 2025) to address these vital needs will likely result in:
  - Increased construction costs
  - Decreased scope of projects that could be completed with the same amount of dollars
  - Increased repair costs to address the significant electrical, plumbing, HVAC, boiler, and roof issues
  - Decreased program offerings to students due to current limitation of space and services (infrastructure)
  - Decreased resources for our teachers to teach with and within
- Because we are no longer leading the area in programs, offerings, and instructional resources
  - Plainly put: We are behind our neighbors to all sides. We lack:
    - Industry standard facilities for trades' instruction
    - Industry standard equipment for trades' instruction
    - Sufficient infrastructure to support the electrical capacity needed for instruction (as well as HVAC and plumbing)
    - Sufficient space needed for proper instruction, including the trades and fine arts
    - Fine Arts instructional areas with proper acoustics and related resources
    - Sufficient gym space and ADA compliant seating so that all of our community members, regardless of age and mobility can attend our events

Then we have lost our **greatest** opportunity to address the vital needs of our students, of all ages, and of our building - which is showing its age - for the **least** amount of investment.



# School District of Shiocton



## **Building Their Future: Envisioning Their Learning Spaces**

Let's take a look at preliminary [renderings](#) of the various projects



# School District of Shiocton



**Questions?**



# School District of Shiocton



## Referendum 2024: Building Their Future

*Thank you  
for  
attending!*





# School District of Shiocton





# School District of Shiocton



## School District of Shiocton

### Mill Rate Comparison

Base Forecast

